



## HEATHSIDE COURT

TADWORTH

[www.michael-everett.co.uk](http://www.michael-everett.co.uk)



# 3 HEATHSIDE COURT

TADWORTH STREET, TADWORTH, KT20 5RY

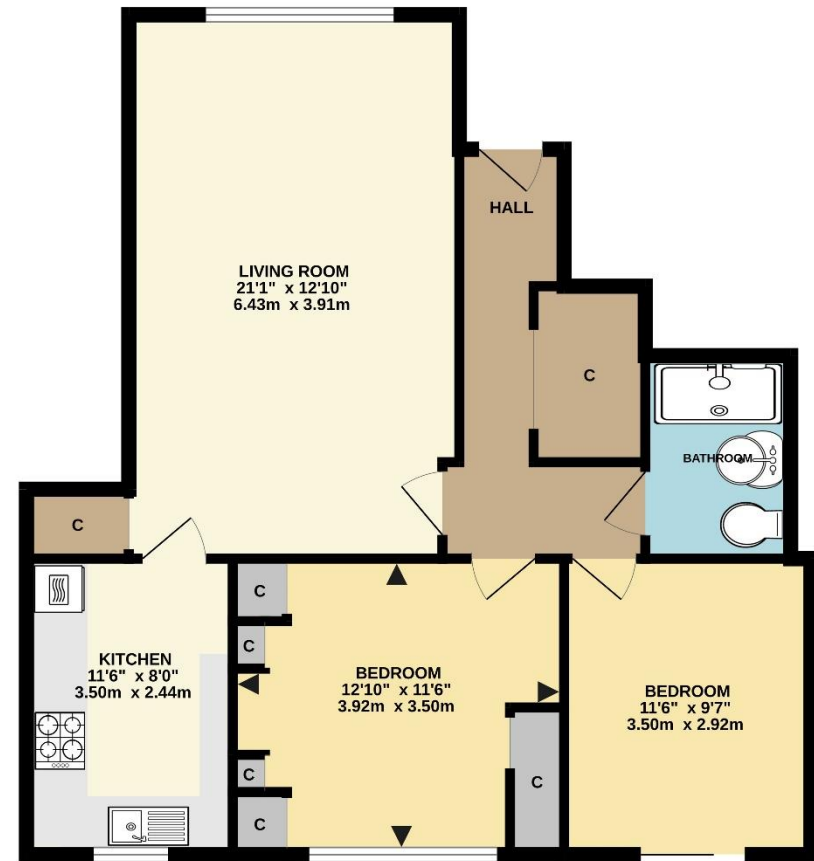
this spacious ground floor apartment, being sold with no onward chain, is in a popular retirement development located midway between Tadworth and Walton Hill and on the very edge of Walton Heath.

The accommodation features a large living room, kitchen complete with appliances, two bedrooms, the largest benefitting from a range of fitted wardrobes and the second, which could be used as a dining room or study having patio doors leading out onto the garden. The shower room features a modern easy access double shower cubicle.

There is a communal day room for residents along with areas of well-maintained communal gardens and parking areas.

SIZE: 773 SQ FT COUNCIL TAX BAND: E EPC RATING: C

ASKING PRICE: **£269,950**



**WALTON ON THE HILL** 61 Walton Street, Walton-on-the-Hill, Surrey KT20 7RZ  
**01737 814877**